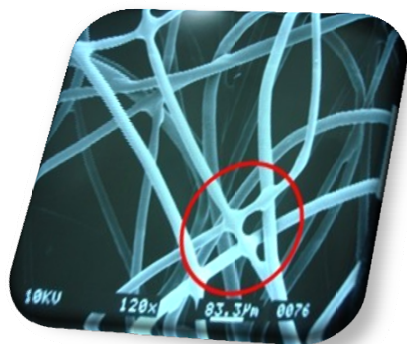


LOW MELTING FIBER



Sheath core type, Produced by bicomponent spinning of general polyester and modified polyester. It can be melted at lower temp than normal fiber and bonded with other fibers. Polyester staple fiber, type 'LMF-U', (TPA processing) Raw white, bicomponent. Low melting fiber with 110C melting point, SEMI DULL 4 DE' X 51 MM

- Specialties**
- *Soft touch, Easy care.
 - * Good washing durability
 - *No-environmental contamination.
 - *Excellent air permeability
 - * Good embossing effect
 - * Good processability (Low heat shrinkage)

Production Item

Type	Denier	Length (mm)	Melting point
Low melting fiber	2, 4, 6, 12,15D	6-~102mm	110 ° C

Application

- Acoustic/Thermal insulation (Especially for Car-interior)
- Mattress, Quilting, Padding
- Geotextile, Filtration
- Hygiene, Medical product

HOLLOW CONJUGATE



Conjugate fiber, produced by bicomponent spinning technology of heterogeneous polyester, having characteristics of superior bulkiness high resilience and duck down-like touch which is generated through its three dimensional helical structure and permanent crimp.

- Specialties**
- *High bulkiness
 - *Permanent bulkiness
 - *Excellent resilience
 - *Duck down-like touch
 - *Light and soft

Production Item

Type	DE	Length (mm)	Specialty
HCF	3~20	32~64	Non-siliconized
HCS			Hollow conjugate Ω type crimp
			Siliconized

Application

- Under wear
- Sports wear
- Casual wear
- Home Textile
- Mattress, Cushion.
- Filling materials.